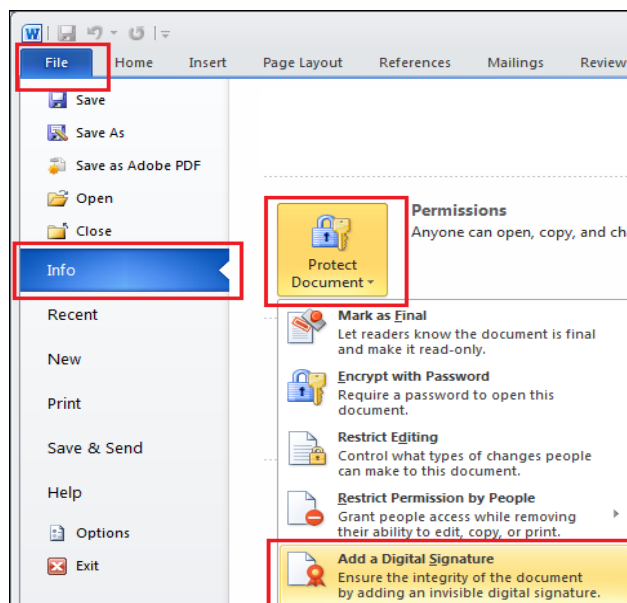
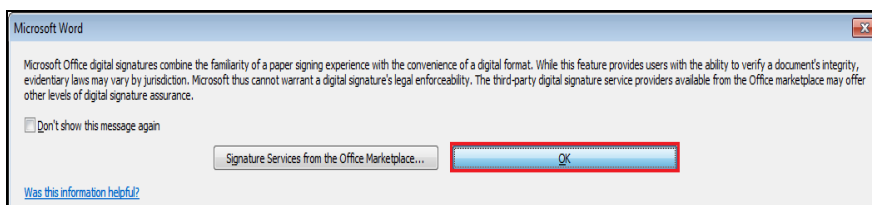


## Semnarea documentelor Microsoft Office 2010

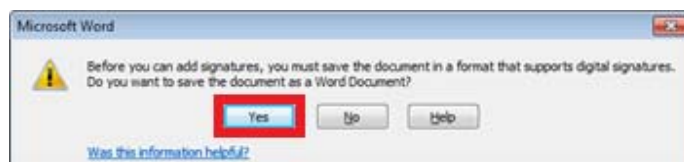
1. Se introduce dispozitivul in portul/extensia **USB**
2. Din Meniul **File** se alege submeniul **Info** >> **Protect Document** >> **Add a Digital Signature**



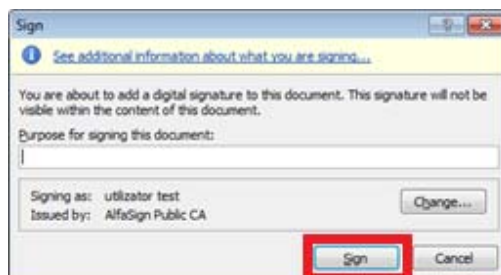
3. Se apasa butonul **OK**



4. In cazul in care documentul nu a fost salvat in forma finala, se va apasa butonul **YES**



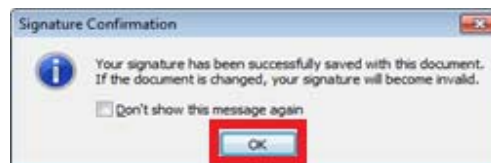
5. Daca se doreste sa se mentioneze motivul semnarii se introduce textul dorit in campul "Purpose for signing this document" si se apasa butonul **Sign**



6. In fereastra aparuta se introduce parola dispozitivului si se apasa **OK**

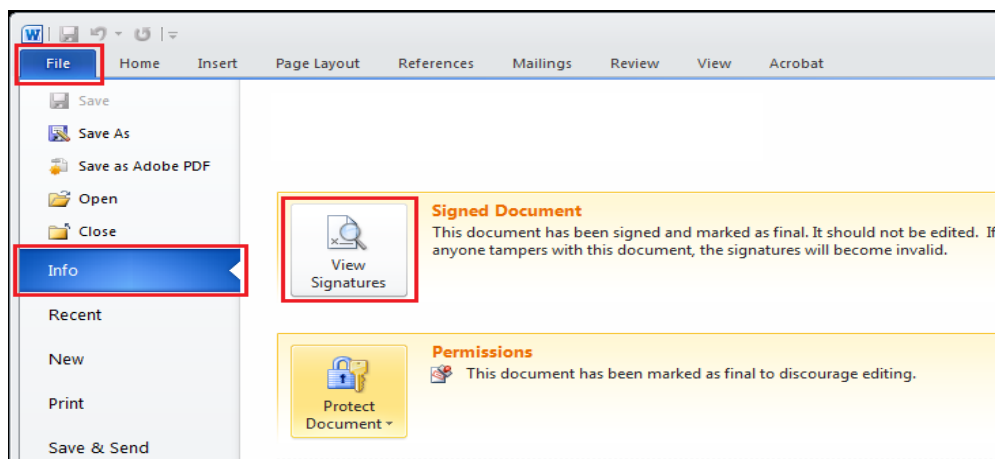


7. Se va apasa butonul **OK** pentru a incheia procesul de semnare a documentului.



8. Verificarea semnarii documentului:

8.1. Din Meniul **File** se alege submeniul **Info** >> **Protect Document** >> **View Signatures**



8.2. Sau se apasa pe iconica (sigiliul) ce apare in bara inferioara a documentului Word



8.3. In partea dreapta a documentului vor aparea informatiile despre certificate

